



READ THESE INSTRUCTIONS / LISEZ CES INSTRUCTIONS  
LEA ESTAS INSTRUCCIONES



**CAUTION:** Before starting turn OFF power at main circuit panel.

**ATTENTION:** Coupez l'alimentation avant de procéder à l'installation.

**ADVERTENCIA:** Antes de comenzar el montaje, cortar la luz en el cuadro general.



- A. Art US-MARINA03L...
- B. Art US-MARINA06L...
- C. Art US-MARINA12L...



Mosaic S.p.A.

Lungo Dora Colletta 113/9 - 10153 Torino - Italy

www.creative-cables.com

gpsr@creative-cables.com

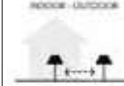
IP44 PLUG / IP67 LED MODULES  
110 - 120 V 60 Hz

A - 3x2W = tot. 6W

B - 6x2W = tot. 12W

C - 12x2W = tot. 24W

LED MODULE 24V 2W



Prodotto idoneo all'uso esterno ed interno.  
The article is suitable for outside and inside use.  
Artikel ist geeignet für zulußfichen und inneren Anwendung.  
Cet article est adapté pour usage externe et interne.  
Producto adecuado para uso en exteriores y en interiores.

**NON - UL - DEVICE**

**suitable for wet locations**

Use a certified electrician to install / Faites appel à un électricien certifié pour installer  
Utilice un electricista certificado para instalar

**CAUTION – RISK OF FIRE. USE ONLY LED LAMPS IN THIS LUMINAIRE.**

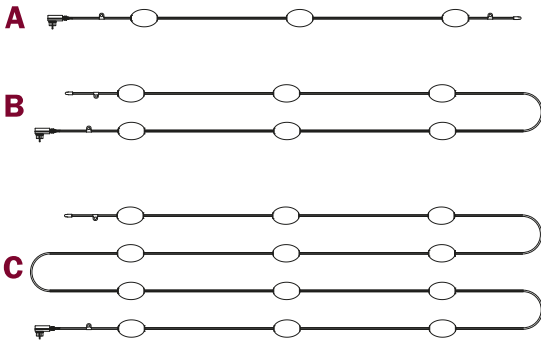
INCANDESCENT AND HALOGEN LAMPS MAY CAUSE SEVERE THERMAL DAMAGE

**ATTENTION – RISQUE D'INCENDIE. UTILISEZ UNIQUEMENT DES LAMPES À DEL DANS CE LUMINAIRE.**

LES LAMPES À INCANDESCENCE ET HALOGÈNES PEUVENT CAUSER DES DOMMAGES THERMIQUES GRAVES

**PRECAUCIÓN – RIESGO DE INCENDIO. USE SÓLO LÁMPARAS LED EN ESTA LUMINARIA.**

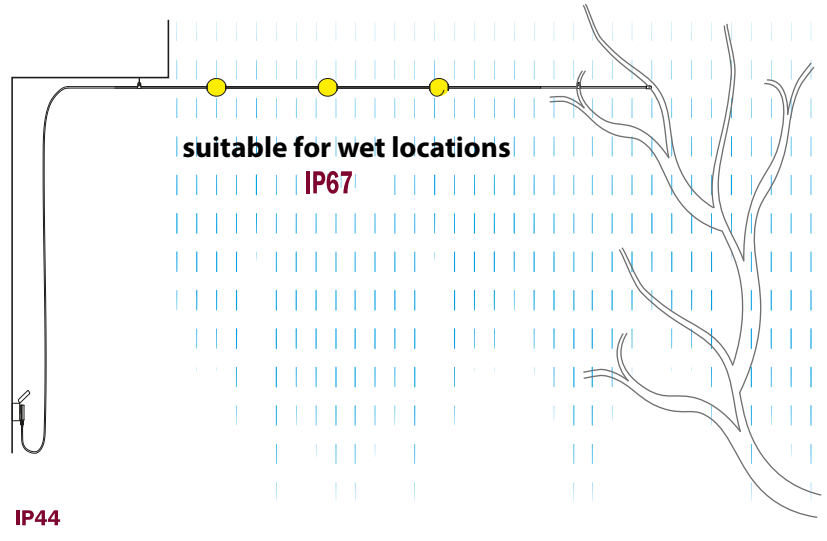
LAS LÁMPARAS INCANDESCENTES Y HALÓGENAS PUEDEN CAUSAR DAÑOS TÉRMICOS SEVEROS



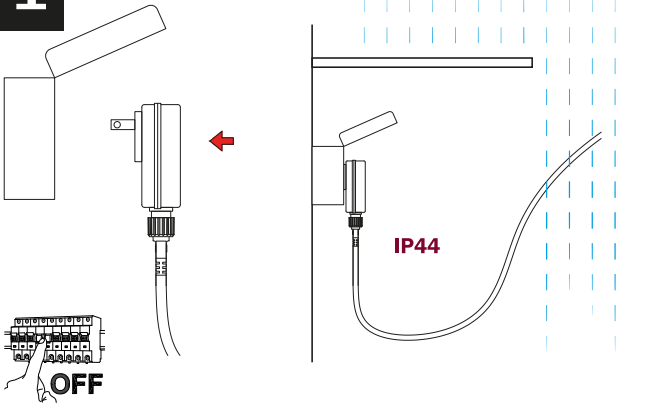
IF THE EXTERNAL FLEXIBLE CABLE OF THIS LUMINAIRE IS DAMAGED, IT SHALL BE EXCLUSIVELY REPLACED BY THE MANUFACTURER OR HIS SERVICE AGENT OR A SIMILAR QUALIFIED PERSON IN ORDER TO AVOID HAZARDS

SAVE THESE INSTRUCTIONS & IMPORTANT SAFEGUARDS  
GARDE ESTAS INSTRUCCIONES Y MEDIDAS DE SEGURIDAD IMPORTANTES  
CONSERVEZ CES INSTRUCCIONES ET MESURES DE PROTECTION DE GRANDE IMPORTANCE

**2**



**1**



IP44



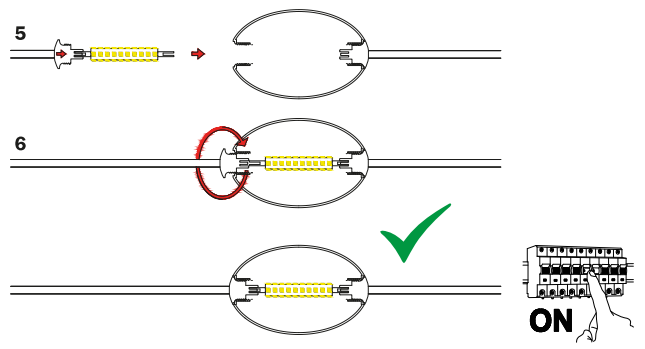
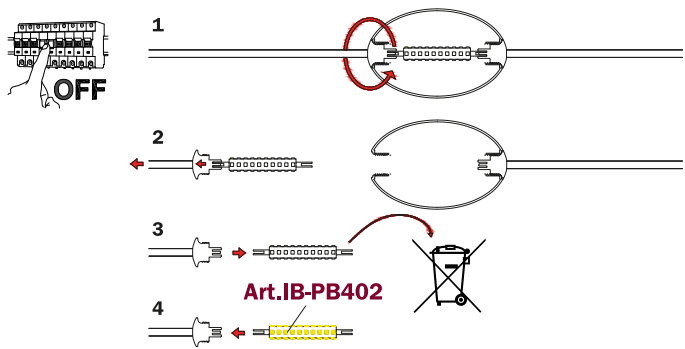
**EN:** How to replace the LED module

**FR:** Comment remplacer le module LED

**DE:** Wie man das LED-Modul ersetzt

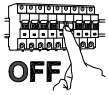
**SP:** Cómo reemplazar el módulo LED

**IT:** Come sostituire il modulo LED





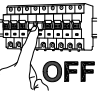
READ THESE INSTRUCTIONS / LISEZ CES INSTRUCTIONS  
LEA ESTAS INSTRUCCIONES



**CAUTION:** Before starting turn OFF power at main circuit panel.

**ATTENTION:** Coupez l'alimentation avant de procéder à l'installation.

**ADVERTENCIA:** Antes de comenzar el montaje, cortar la luz en el cuadro general.



D. Art US-MARINA07T...



Mosaic S.p.A.

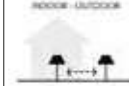
Lungo Dora Colletta 113/9 - 10153 Torino - Italy

www.creative-cables.com

gpsr@creative-cables.com

IP44 PLUG / IP67 LED MODULES  
110 - 120 V 60 Hz  
D - 7X2W = tot. 14W

LED MODULE 24V 2W



**INDOOR - OUTDOOR**  

 Prodotto idoneo all'uso esterno ed interno.  
 The article is suitable for outside and inside use.  
 Artikel ist geeignet für zulfischen und inneren Anwendung.  
 Article est adapté pour usage externe et interne.  
 Producto adecuado para uso en exteriores y en interiores.

**NON - UL - DEVICE**

**suitable for wet locations**

Use a certified electrician to install / Faites appel à un électricien certifié pour installer  
Utilice un electricista certificado para instalar

**CAUTION – RISK OF FIRE. USE ONLY LED LAMPS IN THIS LUMINAIRE.**  
INCANDESCENT AND HALOGEN LAMPS MAY CAUSE SEVERE THERMAL DAMAGE

**ATTENTION – RISQUE D'INCENDIE. UTILISEZ UNIQUEMENT DES LAMPES À DEL DANS CE LUMINAIRE.**  
LES LAMPES À INCANDESCENCE ET HALOGÈNES PEUVENT CAUSER DES DOMMAGES THERMIQUES GRAVES

**PRECAUCIÓN – RIESGO DE INCENDIO. USE SÓLO LÁMPARAS LED EN ESTA LUMINARIA.**  
LAS LÁMPARAS INCANDESCENTES Y HALÓGENAS PUEDEN CAUSAR DAÑOS TÉRMICOS SEVEROS



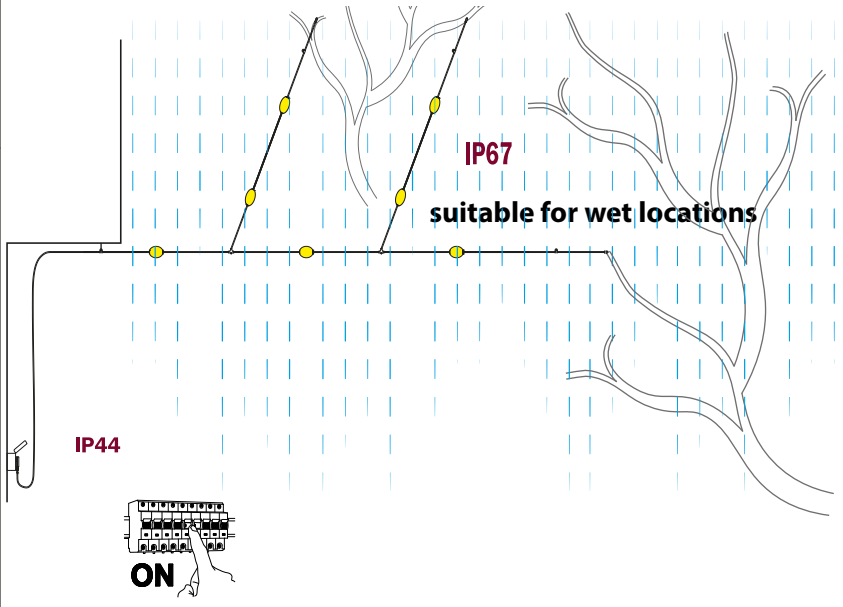
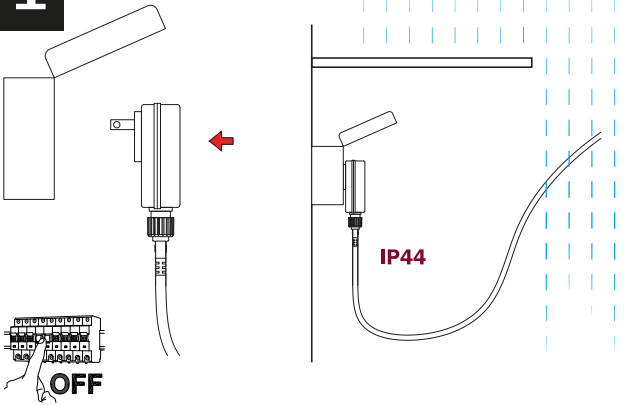
D

IF THE EXTERNAL FLEXIBLE CABLE OF THIS LUMINAIRE IS DAMAGED, IT SHALL BE EXCLUSIVELY REPLACED BY THE MANUFACTURER OR HIS SERVICE AGENT OR A SIMILAR QUALIFIED PERSON IN ORDER TO AVOID HAZARDS

SAVE THESE INSTRUCTIONS & IMPORTANT SAFEGUARDS  
GUARDE ESTAS INSTRUCCIONES Y MEDIDAS DE SEGURIDAD IMPORTANTES  
CONSERVEZ CES INSTRUCTIONS ET MESURES DE PROTECTION DE GRANDE IMPORTANCE

2

1



EN: How to replace the LED module  
FR: Comment remplacer le module LED

DE: Wie man das LED-Modul ersetzt  
SP: Cómo reemplazar el módulo LED

IT: Come sostituire il modulo LED

